



PALLIATIVE MEDICINE

Department of Palliative medicine, SMS medical college organised a CME, "Palliative Medicine; An Update under the chairpersonship of Dr. Ashwin Mathur and organising secretary Dr Yogendra Singhal. CME was attended by senior faculty members and administrators of SMS. It was an attempt to sensitize faculty members of different specialities regarding need of Palliative care.



PALLIATIVE MEDICINE

Need of the hour

- 40 M people require palliative care worldwide
- 78% of people live in low- and middle-income countries.
- Only 14% of people meet their need for palliative care is met.
- 1% of the needy in India have access to opioids
- Need for palliative care will grow
 - Ageing of population
 - Rising burden of noncommunicable diseases
 - Increasing incidence of some communicable diseases.

Palliative Care

Holistic Approach
Care of the body, mind & spirit. Focusing on, social, emotional, cultural, spiritual & intellectual or knowledge aspects of care supported by an interdisciplinary team and training.

Quality of Life
Patients referred to DPH have an expectation of doing, therefore care of the families is included in the care i.e. Care of the infected and affected by the team, while the patient is alive and after the bereavement period.

Life-threatening & life-limiting illness
Life-threatening illness is an illness which could cause a patient to die sooner. AIDS, old age, MND, terminal diabetes or heart disease, and life-limiting conditions which may compromise quality of life (specifically chronic respiratory disorders, severe COPD).

Patients & families
Identifies, knowledge & recognition of symptoms, In-depth professional evaluation, Treatment, Individualized management, emotional, spiritual, social, & bereavement by Palliative Trained Team. (WHO, 2002)

Distribution of adults in need of palliative care at the end of life by disease groups

Cardiovascular diseases	20.8%
Cancer	20.9%
Chronic obstructive pulmonary disease	10.8%
HIV/AIDS	1.0%
Diabetes mellitus	4.9%
Kidney disease	2.9%
Cirrhosis of the liver	1.2%
Alzheimer's and other dementias	1.8%
Multi-drug resistant tuberculosis	1.8%
Parkinson disease	0.8%
Rheumatoid arthritis	0.3%
Multiple sclerosis	0.2%

Department of Palliative Medicine

Initiated in 2020, first in the Government sector in Rajasthan

Functioning as an OPD center since 2014

Services offered

- OPD Services
- Day care & indoor services
- Specialty clinics and interventions
- Home and outreach visits
- Research
- Capacity building – Training, orientation
- Advocacy and awareness generation

TOTAL PATIENTS (3307)

Gender disaggregated: Male 67%, Female 33%

NEW VERSUS FOLLOW UP

No. of patients given morphine

Total no. of Interventions

Two ends of the continuum of care of a patient

"Diagnostic and Therapeutic Strategies" → **"Comfort Care"**

Screening → Active disease identified treatment → Palliative Care → Inactive disease identified treatment → No disease identified treatment → Death → Bereavement

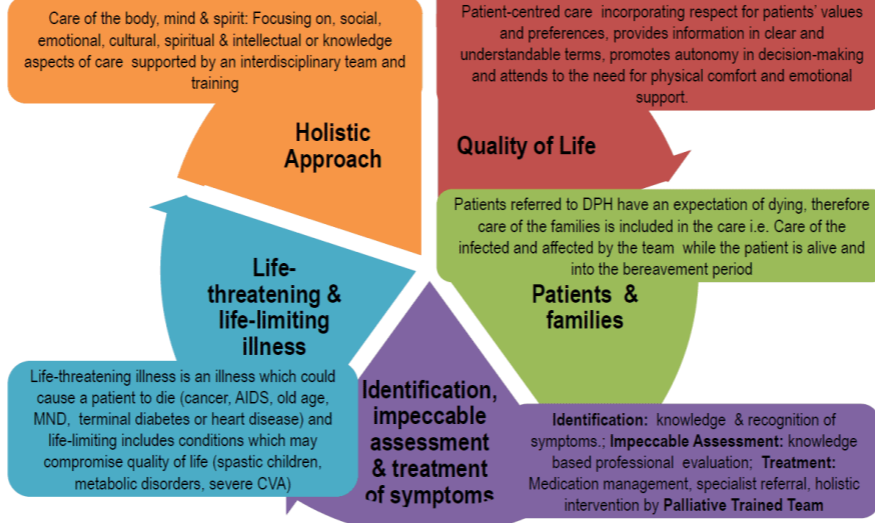
Course of illness: Curative Care → Palliative Care → End of Life

PALLIATIVE MEDICINE

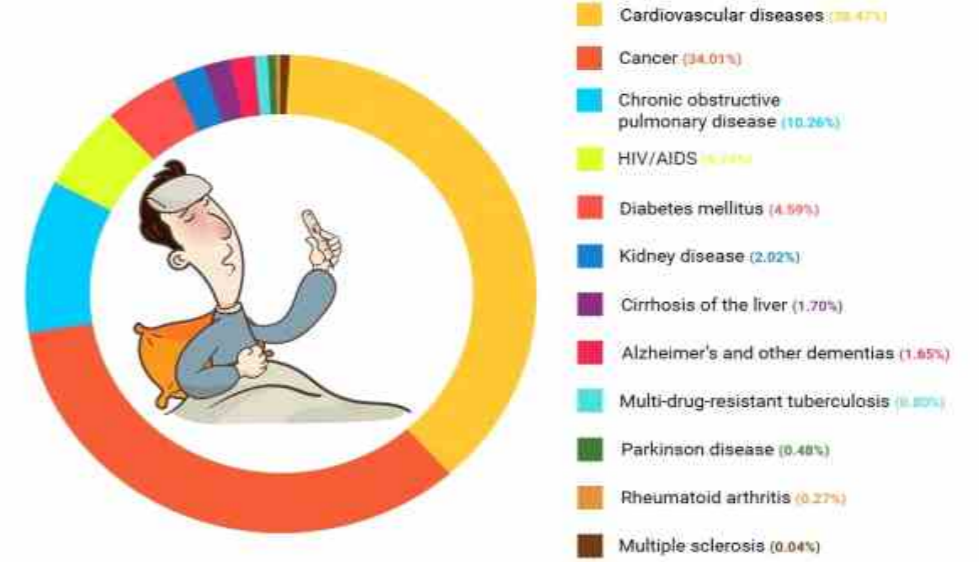
Need of the hour

- 40 M people require palliative care worldwide
- 78% of people live in low- and middle-income countries.
- Only 14% of people meet their need for palliative care is met.
- 1% of the needy in India have access to opioids
- Need for palliative care will grow
 - Ageing of population
 - Rising burden of noncommunicable diseases
 - Increasing incidence of some communicable diseases.

Palliative Care



Distribution of adults in need of palliative care at the end of life by disease groups



Department of Palliative Medicine

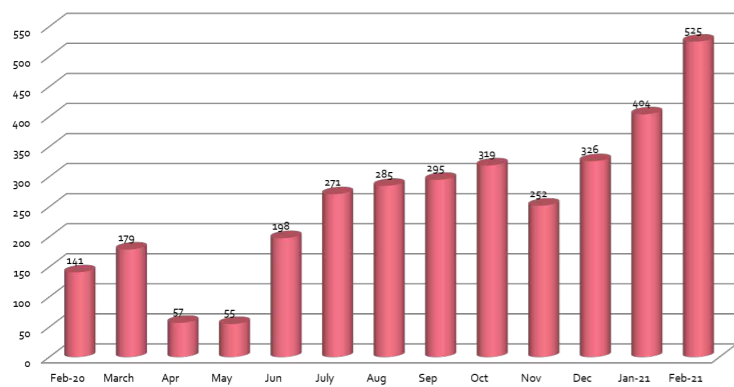
Initiated in 2020, first in the Government sector in Rajasthan

Functioning as an OPD center since 2014

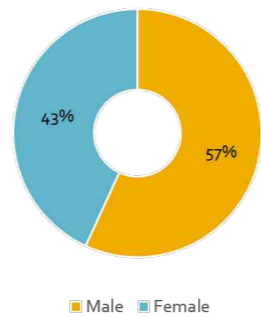
Services offered

- OPD Services
- Day care & indoor services
- Specialty clinics and interventions
- Home and outreach visits
- Research
- Capacity building – Training, orientation
- Advocacy and awareness generation

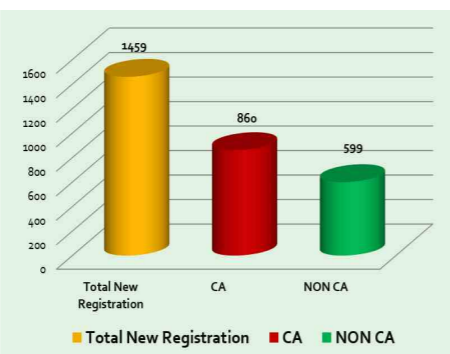
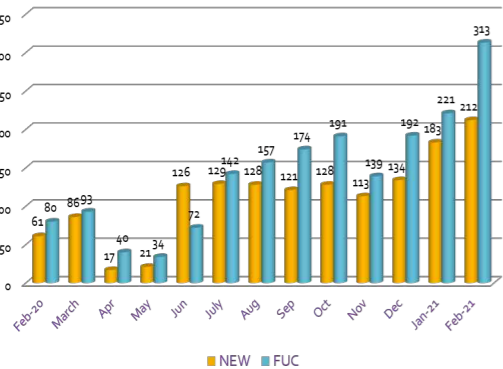
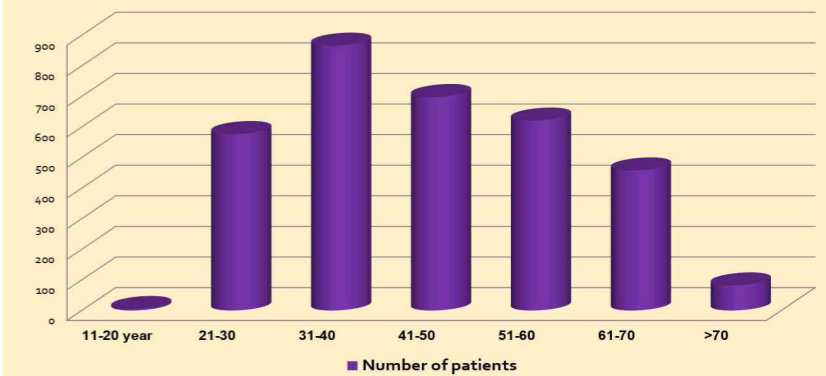
TOTAL PATIENTS (3307)



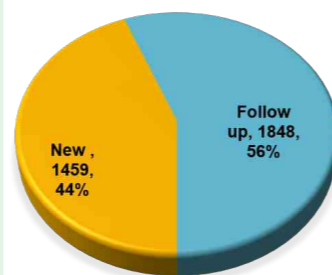
Gender disaggregated



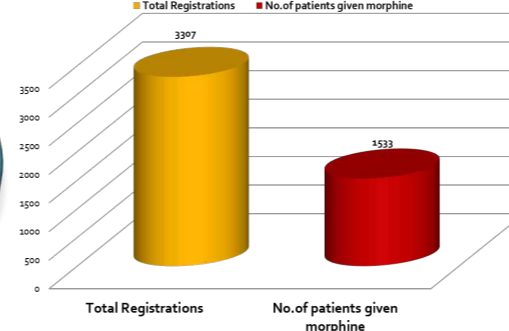
Age group



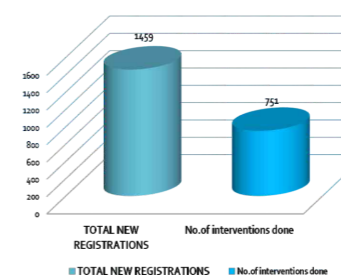
NEW VERSUS FOLLOW UP



No. of patients given morphine



Total no. of Interventions



Two ends of the continuum of care of a patient

